

KOSSAN

PAINT

Colour Card

POWDER COATING

Name Behind Quality



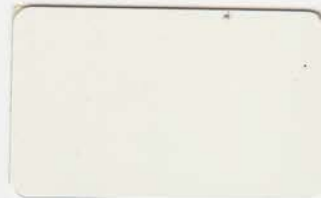
**Architectural
& Industrial**



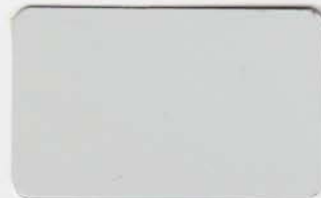
EPOXY-POLYESTER (HYBRID) - Interior



K 2100 HY-1001/A127



K 2000 HY-1007/A1500



K 2100 HY-1011/A1409



K 2000 HY-1001/A792



K 2000 HY-1001/A431



K 2000 HY-1007/A1603



K 2000 HY-1011/A2572



K 2000 HY-1004/A1383



K 2000 HY-1001/A745



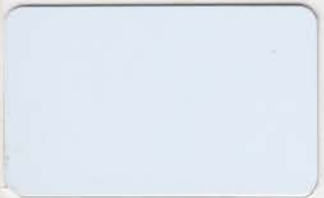
K 2000 HY-1007/A1483



K 2000 HY-1011/A2887



K 2000 HY-1004/A1277



K 2000 HY-1001/A430



K 2000 HY-1007/A1842



K 2100 HY-1011/A 2020



K 2000 HY-1004/A199



K 2000 HY-1001/A479



K 2100 HY-1007/A680



K 2000 HY-1011/A2990



K 2000 HY-1004/A1273



K 2100 HY-1011/A3088



K 2100 HY-1011/A2317



K 2100 HY-1011/A3098



K 2000 HY-1004/A1135



K 1100 EP-1002/A12



K 2100 HY-1002/A72



K 2100 HY-1002/EA102



K 2000 HY-1002/A269

Grades

K 1000 - High gloss	K 3300 - Architectural PE (Semi gloss/Matt)
K 1100 - Semi gloss/matt	K 3400 - Architectural PE (High gloss)
K 2000 - High gloss	K 4000 - Texture
K 2100 - Semi gloss/matt	K 4010 - Wrinkle
K 3000 - High gloss	K 4020 - Hammertone
K 3100 - Semi gloss/matt	K 4030 - Metallic
	K 4040 - Transparent

Type of coating

EP Series - Epoxy (Interior)
 HY Series - Epoxy Polyester (Interior)
 PE Series - Polyester (Exterior)
 APE Series - Architectural Polyester (Exterior)

Colour Code

1001 - White	1008 - Yellow
1002 - Black	1009 - Orange
1003 - Green	1010 - Violet
1004 - Blue	1011 - Grey/Silver
1005 - Red	1012 - Gold
1006 - Brown	1014 - Transparent
1007 - Beige	



K 4000 HY-1008/A372



K 2000 HY-1008/A316



K 2000 HY-1010/A442



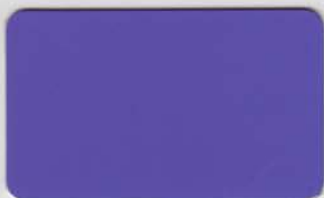
K 2000 HY-1003/A979



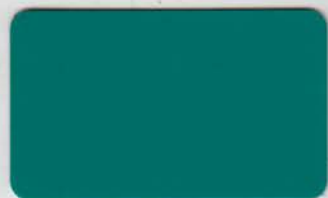
K 2000 HY-1008/A380



K 2000 HY-1005/A187



K 2000 HY-1010/A354



K 2000 HY-1003/A1022



K 2000 HY-1009/A341



K 2000 HY-1005/A202



K 2100 HY-1006/A460



K 2000 HY-1003/A173



K 2000 HY-1009/A213



K 2000 HY-1010/A441



K 2100 HY-1006/A1053



K 2000 HY-1003/A1041

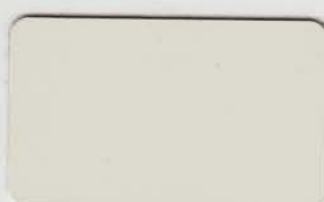
POLYESTER - Exterior



K 3000 PE-1001/A180



K 3000 PE-1001/A311



K 3000 PE-1007/A505



K 3000 PE-1011/A58



K 3100 PE-1011/A29



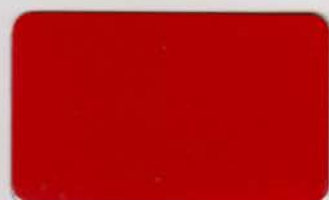
K 3100 PE-1007/A466



K 3100 PE-1011/A1251



K 3000 PE-1008/A118



K 3000 PE-1005/A52



K 3000 PE-1004/A215



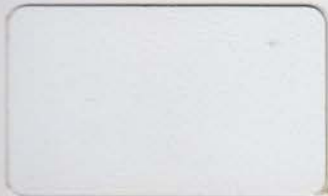
K 3000 PE-1004/A525



K 3000 PE-1006/A563

* *Noted: A reasonable degree of colour variation can be expected on production line application.*

METALLIC (SPECIAL FINISHING)



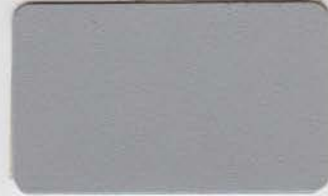
K 4000 HY-1001/A558



K 4010 PE-1001/A317



K 4010 HY-1011/A1240



K 4000 HY-1011/A2345-B



K 4030 HY-1012/A42-A



K 4020 PE-1002/A236-ES



K 4000 HY-1011/A334



K 4010 HY-1001/A296



K 4010 PE-1011/A242



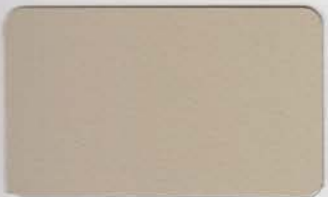
K 4000 HY-1011/A3182-A



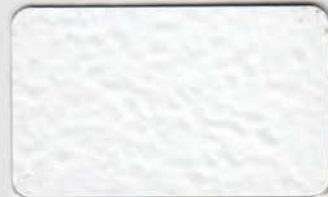
K 4030 HY-1012/A61-B



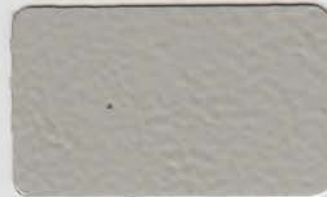
K 4020 PE-1002/A236-ELB



K 4000 HY-1007/A1551



K 4010 PE-1001/A352



K 4010 HY-1007/A611



K 4030 HY-1011/A922-E



K 4030 HY-1010/A441-MA



K 4020 PE-1002/A236-RGS



K 4000 HY-1011/A3278



K 4010 PE-1007/A169



K 4010 HY-1007/A588



K 4010 HY-1009/A230



K 4030 HY-1011/A2885-A



K-4020 PE1002/A272-TC3



K 4000 HY-1011/A229



K 4010 PE-1011/A268



K 4010 HY-1007/A239



K 4010 HY-1005/A40



K 4030 HY-1011/A2852-A



K 4020 PE-1002/A236-ERCP3



K 4000 HY-1006/A531



K 4000 HY-1011/A1052



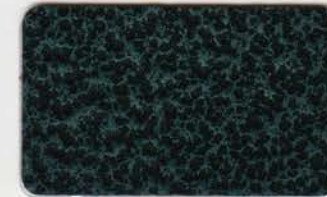
K 4010 HY-1011/A580



K 4010 PE-1004/A494



K 4030 HY-1011/A2845-A



K 4020 PE-1002/A236-EGRN



K 4000 HY-1002/A64



K 4000 HY-1002/A300



K 4010 PE-1011/A340



K 4010 PE-1002/A41

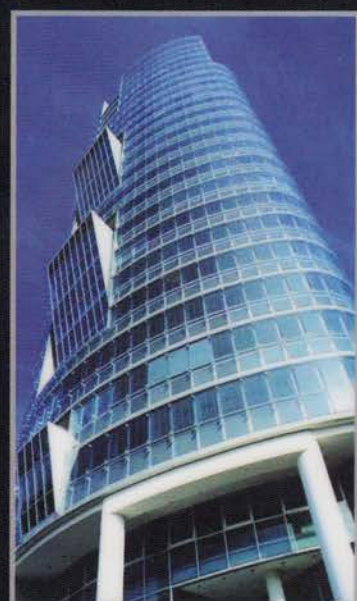
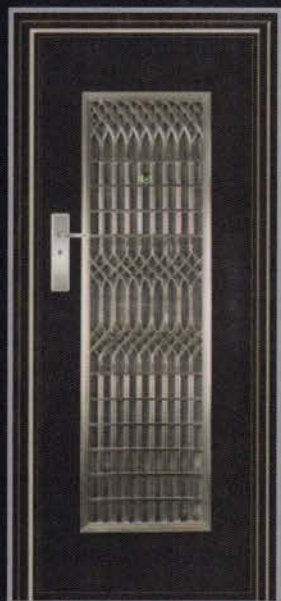


K 4030 HY-1002/A269-A



K 4020 PE-1002/A236-EBLP





COMPANY PROFILE



Kossan Paint (M) Sdn Bhd has its humble beginning back in 1987 with a limited range of wet paint for industrial and marine uses. Encouraged by the wide acceptability of its wet paint products, Kossan Paint (M) Sdn Bhd went a step further to introduce powder coatings products in early 2001. The company has continuously invested heavily in skilled training and product innovation (R&D) to provide superior quality at an affordable price.

Kossan Paint operates with total workforce of 90 workers and has grown from strength to strength not just through superior quality and services but also the employment of advance manufacturing equipment and aggressive R&D initiatives. Kossan Paint is able to roll out its products in a more cost-effective mode compared to its rivals.

Kossan Paint (M) Sdn Bhd currently runs on a state-of-the-art facility along Jalan Kapar, Klang, and Selangor. Spreading over a production area of 9,800 square meters, the plant is equipped the most sophisticated manufacturing equipment and an intergraded R&D department. The plant will have the capacity of churning out some 10,000 tons/year of marine, industrial, decorative paints & etc.

PRODUCT SPECIFICATION

THEORITICAL COVERAGE

Products	S.G	Film Thickness (um)								
		40	50	60	70	80	90	100	110	120
Transparent	1.20	21	17	14	12	10	9	8	8	7
	1.25	20	16	13	11	10	9	8	7	7
Black Colour	1.30	19	15	13	11	10	9	8	7	6
	1.35	19	15	12	11	9	8	7	7	6
	1.40	18	14	12	10	9	8	7	6	6
	1.45	17	14	11	10	9	8	7	6	6
General Colour	1.50	17	13	11	10	8	7	7	6	6
	1.55	16	13	11	9	8	7	6	6	5
	1.60	16	13	10	9	8	7	6	6	5
	1.65	15	12	10	9	8	7	6	6	5
High Density	1.70	15	12	10	8	7	7	6	5	5
	1.75	14	11	10	8	7	6	6	5	5

* Sq. Meter per kg of powder

COMPARATIVE COATINGS PERFORMANCE

PROPERTIES	EPOXY	HYBRID	POLYESTER		
			TGIC	PU	SUPER
Appearance	6	7	7	9	8
Hardness	9	8	6	6	6
Flexibility	8	8	8	8	6
Impact	8	6	8	8	3
Adhesion	9	8	8	8	5
Exterior durability	2	3	8	8	9
Corrosion resistance	9	8	6	6	6
Chemical resistance	8	7	8	6	8

Rating: 10 = excellent, 5 = average, 2 = poor

Super: TGIC - cured polyester using superdurable resin

Data quoted is typical but may vary from product to product

CHEMICAL RESISTANCE OF POWDER

CHEMICALS	EPOXY	POLYESTER EPOXY	POLYESTER (TGIC CURED)
Fresh water	+	+	+
Salt water	+	+	+
Sulphuric acid 10%	+	+	+
Sulphuric acid conc.	-	-	-
Hydrochloric acid 10%	+	+	+
Hydrochloric acid conc.	±	±	±
Nitric acid 10%	±	-	-
Nitric acid conc.	-	-	-
Phosphoric acid 50%	+	+	+
Caustic soda 10%	+	±	+
Caustic soda 30%	+	-	±
Ammonia 10%	±	±	±
Acetic acid 10%	+	+	+
Tartaric acid 5%	+	+	+
Lactic acid 10%	+	+	+
Ethyl alcohol 96%	+	+	+
Methyl ethyl ketone	±	-	-
Acetone	-	±	-
Petroleum	+	+	+
Trichloroethylene	-	-	-
Glycerine	+	+	+
Triethylamine	+	+	+
Toluene	+	±	±
Methyl Chloride	-	-	-
Hydrogen peroxide 3%	±	-	-
Cyclohexanone	-	-	-
Linseed oil	+	+	+
Penetrating Oil	+	+	+

Resistance test by immersion at 20°C

+ Resistance good; ± Resistance limited; - Resistance poor



**KOSSAN PAINT (M) SDN BHD
(Central Branch)**

1, Jalan Koporat 1/KU 9,
Taman Perindustrian Meru,
42200 Kapar, Selangor Darul Ehsan, Malaysia
Tel: 03-3392 2799 03-3392 4296 / 97 / 99 / 4307
Fax: 03-3392 3799
E-mail: sales@kop.com.my

**KOSSAN PAINT (M) SDN BHD
(Sandakan Branch)**

Ground Floor, Block N,
Lot 9B, Bandar Ramai-Ramai,
P.O. Box 317, 90007 Sandakan, Sabah.
Tel: 089-272 417
Fax: 089-272 451

**KOSSAN PAINT (M) SDN BHD
(Kota Kinabalu Branch)**

Ground Floor, Lot No. 11, Block B,
Hiong Tiong, Industrial Centre,
Lorong Buah Salak,
KM11.2, Jalan Tuaran, Inanam,
88450 Kota Kinabalu, Sabah.
Tel: 088-383 457
Fax: 088-382 457

**KOSSAN PAINT (M) SDN BHD
(Sibu Branch)**

No.4, Jalan Maludan Utara,
96000 Sibu, Sarawak.
Tel: 084-216 291
Fax: 084-215 101