

KOSSAN

PAINT

Colour Card

POWDER COATINGS

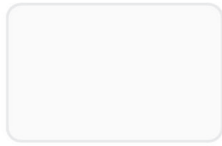
Name Behind Quality



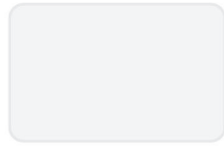
**Architectural
& Industrial Use**



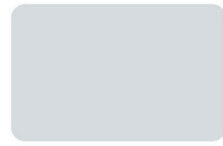
Epoxy-polyester (Hybrid) - Interior



K 2100 HY-1001/A127



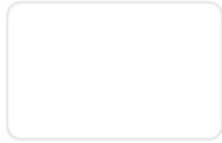
K 2000 HY-1001/A648



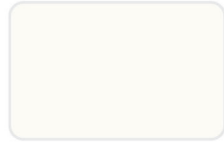
K 2100 HY-1011/A1409



K 2000 HY-1001/A792



K 2000 HY-1001/A431



K 2000 HY-1001/A813



K 2000 HY-1011/A2572



K 2000 HY-1004/A94



K 2100 HY-1001/A510



K 2000 HY-1007/A1500



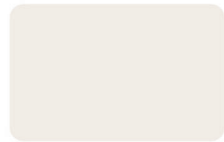
K 2000 HY-1011/A4175



K 2000 HY-1004/A199



K 2000 HY-1001/A479



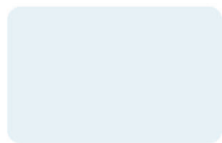
K 2000 HY-1007/A1603



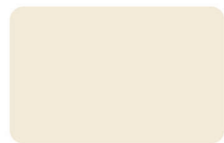
K 2100 HY-1011/A4201



K 2000 HY-1004/A1135



K 2000 HY-1001/A430



K 2000 HY-1007/A1842



K 2000 HY-1011/A2990



K 2000 HY-1004/A1273



K 2100 HY-1007/A680



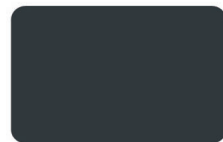
K 2100 HY-1011/A2317



K 2100 HY-1004/A1393



K 2100 HY-1006/A1053



K 2100 HY-1011/A3098



K 1100 EP-1002/A12



K 2100 HY-1002/A72



K 2100 HY-1002/EA102



K 2000 HY-1002/A269

Grades

K 1000 - High gloss	K 3300 - Architectural PE (Semi gloss/Matt)
K 1100 - Semi gloss/matt	K 3400 - Architectural PE (High gloss)
K 2000 - High gloss	K 4000 - Texture
K 2100 - Semi gloss/matt	K 4010 - Wrinkle
K 3000 - High gloss	K 4020 - Hammertone
K 3100 - Semi gloss/matt	K 4030 - Metallic
	K 4040 - Transparent

Type of coating

EP Series - Epoxy (Interior)
 HY Series - Epoxy Polyester (Interior)
 PE Series - Polyester (Exterior)
 APE Series - Architectural Polyester (Exterior)

Colour Code

1001 - White	1008 - Yellow
1002 - Black	1009 - Orange
1003 - Green	1010 - Violet
1004 - Blue	1011 - Grey/Silver
1005 - Red	1012 - Gold
1006 - Brown	1014 - Transparent
1007 - Beige	



K 2000 HY-1008/A3246



K 2000 HY-1009/A416



K 2000 HY-1010/A2502



K 2000 HY-1003/A979



K 2000 HY-1008/A1266



K 2000 HY-1005/A250



K 2000 HY-1010/A543



K 2000 HY-1003/A342



K 2000 HY-1008/A333



K 2000 HY-1005/A1002



K 2000 HY-1010/A642



K 2000 HY-1003/A1041



K 2000 HY-1009/A341



K 2000 HY-1010/A441

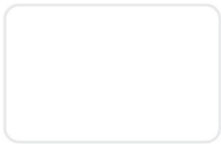


K 2000 HY-1010/A354



K 2000 HY-1003/A1184

Polyester - Exterior



K 3000 PE-1001/A402



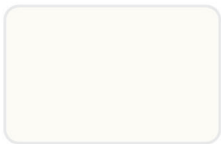
K 3100 PE-1007/A466



K 3100 PE-1004/A3508



K 3100 PE-1008/A2896



K 3100 PE-1001/A109



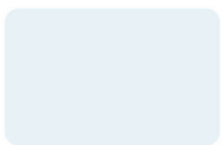
K 3100 PE-1011/A29



K 3100 PE-1011/A124



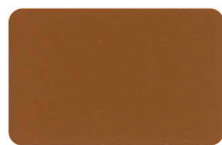
K 4010 PE-1009/A3489



K 3000 PE-1001/A387



K 3100 PE-1011/A4670



K 4000 PE-1006/A1109



K 4010 PE-1005/A80



K 3000 PE-1004/A525



K 3000 PE-1006/A563

*** Noted: A reasonable degree of colour variation can be expected or production line application.**

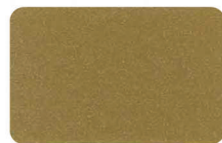
Special Finishing & Metallic



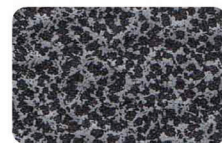
K 4000 HY-1001/A1058



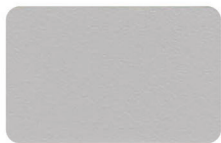
K 4010 PE-1001/A317



K 4030 HY-1012/A61-C



K 4020 PE-1002/A236-ES



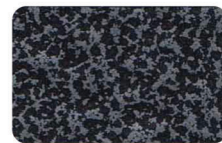
K 4000 HY-1011/A334



K 4010 PE-1001/A352



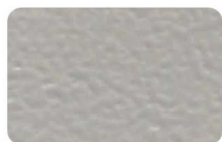
K 4030 HY-1012/A61-B



K 4020 PE-1002/A236-ELB



K 4000 HY-1007/A1961



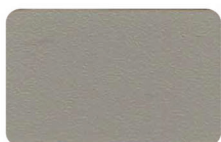
K 4010 HY-1007/A611



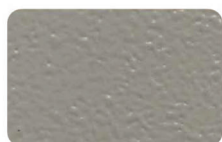
K 4000 HY-1011/A4142-A



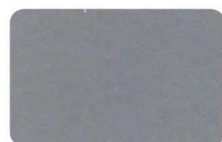
K 4020 PE-1002/A272-TC3



K 4000 HY-1007/A358



K 4010 HY-1007/A239



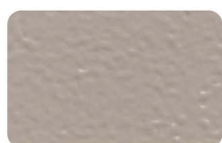
K 4030 HY-1011/A547-E



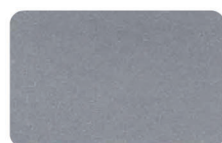
K 4020 PE-1002/A236-ERCP3



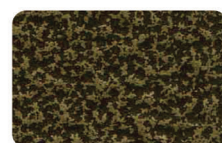
K 4000 HY-1006/A531



K 4010 HY-1007/A588



K 4030 HY-1011/A922-E



K 4020 PE-1002/A236-RGS



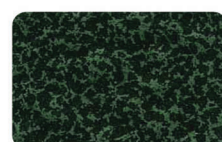
K 4000 HY-1011/A1052



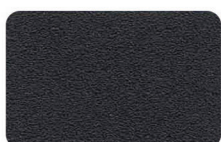
K 4010 PE-1011/A268



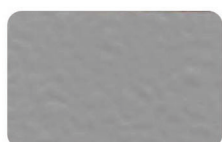
K 4030 HY-1011/A2885-A



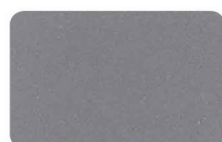
K 4020 PE-1002/A236-EGRN



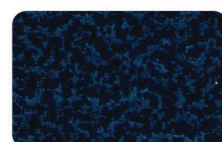
K 4000 HY-1002/A64



K 4010 PE-1011/A242



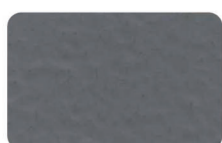
K 4030 HY-1011/A4314-A



K 4020 PE-1002/A236-EBL



K 4000 HY-1002/A300



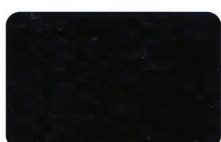
K 4010 PE-1011/A3387



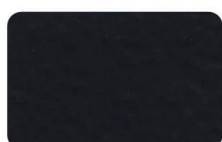
K 4030 HY-1011/A2013-A



K 4030 HY-1002/A312-B



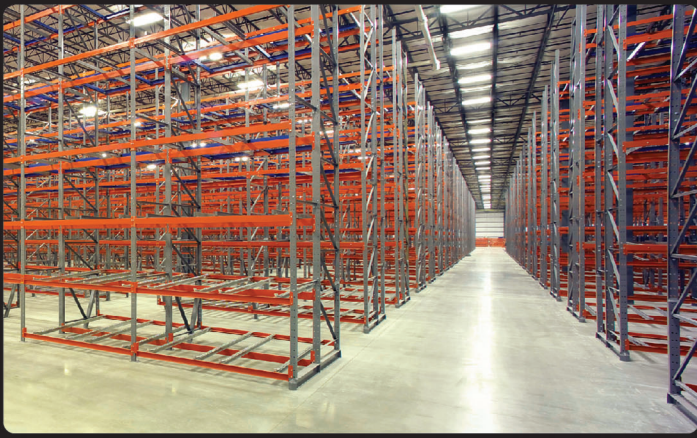
K 4010 PE-1002/A41



K 4010 PE-1011/A340



Product Specification



THEORITICAL COVERAGE

Products	S.G	Film Thickness (µm)								
		40	50	60	70	80	90	100	110	120
Transparent	1.20	21	17	14	12	10	9	8	8	7
	1.25	20	16	13	11	10	9	8	7	7
Black Colour	1.30	19	15	13	11	10	9	8	7	6
	1.35	19	15	12	11	9	8	7	7	6
	1.40	18	14	12	10	9	8	7	6	6
	1.45	17	14	11	10	9	8	7	6	6
General Colour	1.50	17	13	11	10	8	7	7	6	6
	1.55	16	13	11	9	8	7	6	6	5
	1.60	16	13	10	9	8	7	6	6	5
	1.65	15	12	10	9	8	7	6	6	5
High Density	1.70	15	12	10	8	7	7	6	5	5
	1.75	14	11	10	8	7	6	6	5	5

*Sq. Meter per kg of powder

COMPARATIVE COATINGS PERFORMANCE

PROPERTIES	EPOXY	HYBRID	POLYESTER		
			TGIC	PU	SUPER
Appearance	6	7	7	9	8
Hardness	9	8	6	6	6
Flexibility	8	8	8	8	6
Impact	8	6	8	8	3
Adhesion	9	8	8	8	5
Exterior durability	2	3	8	8	9
Corrosion resistance	9	8	6	6	6
Chemical resistance	8	7	8	6	8

Rating : 10 = excellent, 5 = average, 2 = poor

Super : TGIC - cured polyester using superdurable resin

Data quoted is typical but may vary from product to product

CHEMICAL RESISTANCE OF POWDER

CHEMICALS	EPOXY	POLYESTER EPOXY	POLYESTER (TGIC CURED)
Fresh water	+	+	+
Salt water	+	+	+
Sulphuric acid 10%	+	+	+
Sulphuric acid conc.	-	-	-
Hydrochloric acid 10%	+	+	+
Hydrochloric acid conc.	±	±	±
Nitric acid 10%	±	-	-
Nitric acid conc.	-	-	-
Phosphoric acid 50%	+	+	+
Caustic soda 10%	+	±	±
Caustic soda 30%	+	-	±
Ammonia 10%	±	±	±
Acetic acid 10%	+	+	+
Tartaric acid 5%	+	+	+
Lactic acid 10%	+	+	+
Ethyl alcohol 96%	+	+	+
Methyl ethyl ketone	±	-	-
Acetone	-	±	-
Petroleum	+	+	+
Trichloroethylene	-	-	-
Glycerine	+	+	+
Triethylamine	+	+	+
Toluene	+	±	±
Methyl Chloride	-	-	-
Hydrogen peroxide 3%	±	-	-
Cyclohexanone	-	-	-
Linseed oil	+	+	+
Penetrating Oil	+	+	+

Resistance test by immersion at 20°C

+ Resistance good; ± Resistance limited; - Resistance poor



Koskote





KOSSAN PAINT (M) SDN BHD
KOSSAN PAINT MARKETING SDN BHD

**CENTRAL
HQ**

1, Jalan Koporat 1/KU 9, Taman Perindustrian Meru,
42200 Kapar, Selangor Darul Ehsan, Malaysia.
Tel : +603-3392 2799 / 4296 / 4297 / 4299 / 4307
Fax : +603-3392 3799
Email : sales@kossanpaint.com.my
Website : www.kossanpaint.com

**NORTH MALAYSIA
Penang Branch**

No. 2A, Lorong Asas Jaya 9,
Kawasan Industry Ringan Asas Jaya,
14000 Bukit Mertajam, Pulau Pinang, Malaysia
Tel : +604-504 1559 Fax : +604-506 2559
Email : kpmjpg@kossanpaint.com.my

**SOUTH MALAYSIA
Johor Branch**

No. 28 Jalan Maju Cemerlang 1,
Taman Perindustrian Maju Cemerlang,
81800 Ulu Tiram, Johor, Malaysia.
Tel : +607-859 0299 Fax : +607-859 0229
Email : kpmjhb@kossanpaint.com.my

**EAST MALAYSIA
Sandakan Branch**

Ground Floor, Lot 1 & 2, Block K,
Bandar Ramai-Ramai, Leila Road,
P.O. Box 317, 90703 Sandakan, Sabah, Malaysia
Tel : +6089-272 417 Fax : +6089-272 451
Email : kpmsdk@kossanpaint.com.my

Kota Kinabalu Branch

Lot SD 39 Semi-Detached Warehouse,
Lorong Industrial Warisan 3,
Taman Industrial Warisan Indah,
KM 11.2, Jalan Tuaran, Inanam,
88450 Kota Kinabalu, Sabah, Malaysia.
Tel : +6088-383 457 Fax : +6088-382 457
Email : kpmkk@kossanpaint.com.my

Sibu Branch

No. 6B, 2/L 10, Wong Ting Hock 1/2 Miles,
96000 Sibu, Sarawak, Malaysia.
Tel : +6084-326 291 H/P : 016-220 6291
Email : kpmssibu@kossanpaint.com.my